

MČR Seniorů 2013 - Pardubice



Oil Pattern Distance: 39 Feet **Reverse Brush Drop:** 39 Feet **Oil Per Board:** 40 uL
Forward Oil Total: 11.44 mL **Reverse Oil Total:** 6.68 mL **Volume Oil Total:** 18.12 mL
Forward Boards Crossed: 286 Boards **Reverse Boards Crossed:** 167 Boards **Total Boards Crossed:** 453 Boards

	Start	Stop	Loads	Speed	Crossed	Start	End	Feet	T.Oil
1	2L	2R	3	10	111	0.0	2.8	2.8	4440
2	9L	9R	2	10	46	2.8	5.6	2.8	1840
3	10L	10R	2	14	42	5.6	9.5	3.9	1680
4	11L	11R	2	14	38	9.5	13.4	3.9	1520
5	12L	12R	2	14	34	13.4	17.3	3.9	1360
6	13L	13R	1	14	15	17.3	19.2	1.9	600
7	2L	2R	0	22	0	19.2	29.0	9.8	0
8	2L	2R	0	30	0	29.0	39.0	10.0	0

Forward Reverse More

	Start	Stop	Loads	Speed	Crossed	Start	End	Feet	T.Oil
1	2L	2R	0	30	0	39.0	31.0	-8.0	0
2	13L	13R	2	22	30	31.0	24.8	-6.2	1200
3	12L	12R	2	22	34	24.8	18.6	-6.2	1360
4	11L	11R	2	22	38	18.6	12.4	-6.2	1520
5	10L	10R	2	18	42	12.4	7.3	-5.1	1680
6	9L	9R	1	14	23	7.3	5.4	-1.9	920
7	2L	2R	0	10	0	5.4	0.0	-5.4	0

Forward Reverse More

Conditioner:
Type In or Select One

TransferType:
Transfer Brush

Forward



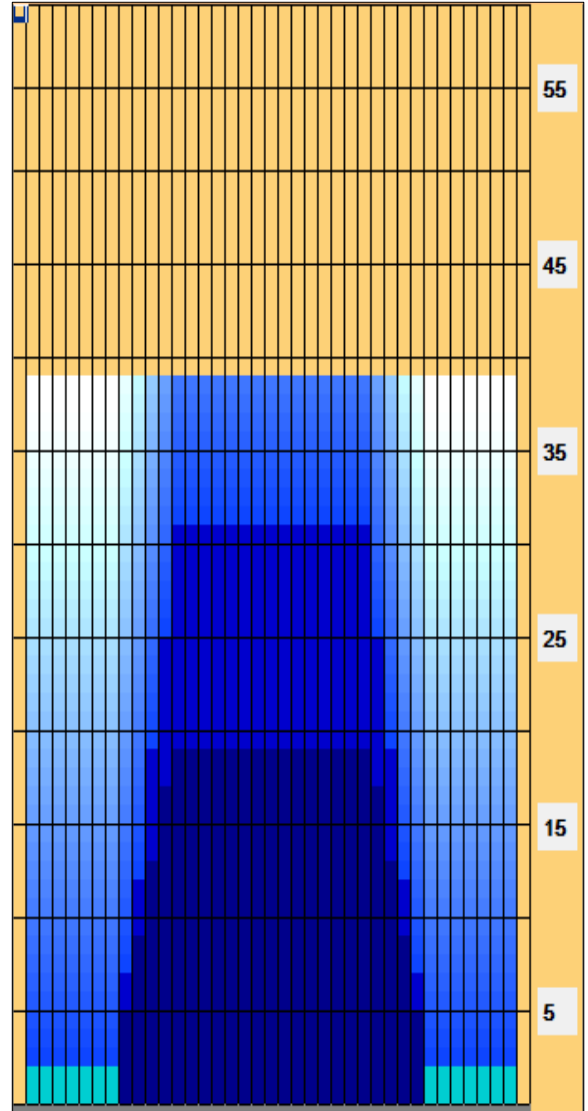
Reverse



Combined



Buff



Item	3L-7L:18L-18R	8L-12L:18L-18R	13L-17L:18L-18R	18L-18R:17R-13R	18L-18R:12R-8R	18L-18R:7R-3R
Description	Outside Track:Middle	Middle Track:Middle	Inside Track:Middle	Middle:Inside Track	Middle:Middle Track	Middle:Outside Track
Track Zone Ratio	7	2.06	1	1	2.06	7

