

900Global Sprinter X-shop, únor 2016



Oil Pattern Distance: 41 Feet **Reverse Brush Drop:** 41 Feet **Oil Per Board:** 40 uL
Forward Oil Total: 13.76 mL **Reverse Oil Total:** 11.84 mL **Volume Oil Total:** 25.6 mL
Forward Boards Crossed: 344 Boards **Reverse Boards Crossed:** 296 Boards **Total Boards Crossed:** 640 Boards

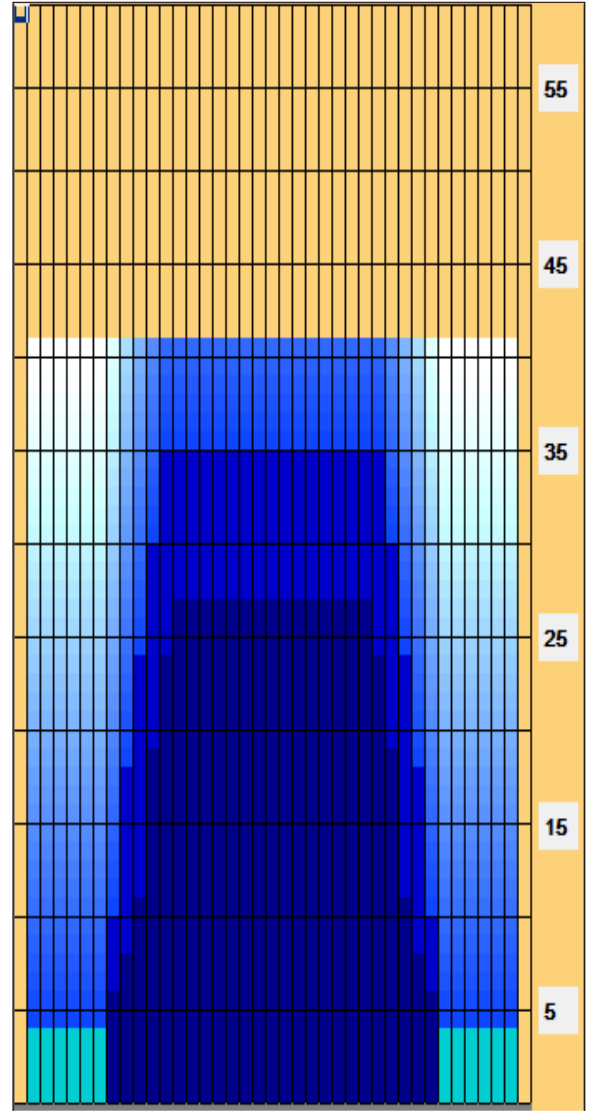
	Start	Stop	Loads	Speed	Crossed	Start	End	Feet	T.Oil
1	2L	2R	4	10	148	0.0	4.2	4.2	5920
2	8L	8R	1	14	25	4.2	6.1	1.9	1000
3	9L	9R	1	14	23	6.1	8.0	1.9	920
4	10L	10R	2	14	42	8.0	11.9	3.9	1680
5	11L	11R	3	18	57	11.9	19.5	7.6	2280
6	12L	12R	2	18	34	19.5	24.6	5.1	1360
7	13L	13R	1	18	15	24.6	27.1	2.5	600
8	2L	2R	0	30	0	27.1	41.0	13.9	0

	Start	Stop	Loads	Speed	Crossed	Start	End	Feet	T.Oil
1	2L	2R	0	30	0	41.0	35.0	-6.0	0
2	12L	12R	2	18	34	35.0	29.9	-5.1	1360
3	11L	11R	3	14	57	29.9	24.0	-5.9	2280
4	10L	10R	3	14	63	24.0	18.1	-5.9	2520
5	9L	9R	4	14	92	18.1	10.2	-7.9	3680
6	8L	8R	2	10	50	10.2	7.4	-2.8	2000
7	2L	2R	0	10	0	7.4	0.0	-7.4	0

Conditioner: Fire

TransferType:
Transfer Roller

- Forward
- Reverse
- Combined
- Buff



Item	3L-7L:18L-18R	8L-12L:18L-18R	13L-17L:18L-18R	18L-18R:17R-13R	18L-18R:12R-8R	18L-18R:7R-3R
Description	Outside Track:Middle	Middle Track:Middle	Inside Track:Middle	Middle: Inside Track	Middle:Middle Track	Middle:Outside Track
Track Zone Ratio	7	1.63	1	1	1.63	7

