

2011 ECC 35' v2



Oil Pattern Distance:	35 Feet	Reverse Brush Drop:	30 Feet	Oil Per Board:	40 uL
Forward Oil Total:	14.48 mL	Reverse Oil Total:	9.08 mL	Volume Oil Total:	23.56 mL
Forward Boards Crossed:	362 Boards	Reverse Boards Crossed:	227 Boards	Total Boards Crossed:	589 Boards

	Start	Stop	Loads	Speed	Crossed	Start	End	Feet	T.Oil
1	2L	2R	2	14	74	0.0	1.9	1.9	2960
2	4L	4R	2	18	66	1.9	7.0	5.1	2640
3	5L	5R	2	18	62	7.0	12.1	5.1	2480
4	6L	6R	2	18	58	12.1	17.2	5.1	2320
5	7L	7R	2	18	54	17.2	22.3	5.1	2160
6	8L	8R	1	18	25	22.3	24.8	2.5	1000
7	9L	9R	1	18	23	24.8	27.3	2.5	920
8	2L	2R	0	18	0	27.3	29.0	1.7	0
9	2L	2R	0	30	0	29.0	35.0	6.0	0

Navigation: Forward Reverse More

	Start	Stop	Loads	Speed	Crossed	Start	End	Feet	T.Oil
1	2L	2R	0	30	0	35.0	27.0	-8.0	0
2	7L	7R	1	22	27	27.0	23.9	-3.1	1080
3	6L	6R	1	22	29	23.9	20.8	-3.1	1160
4	5L	5R	1	22	31	20.8	17.7	-3.1	1240
5	4L	4R	1	18	33	17.7	15.2	-2.5	1320
6	3L	3R	2	18	70	15.2	10.1	-5.1	2800
7	2L	2R	1	14	37	10.1	8.2	-1.9	1480
8	2L	2R	0	14	0	8.2	0.0	-8.2	0

Navigation: Forward Reverse More

Conditioner:
Infinity

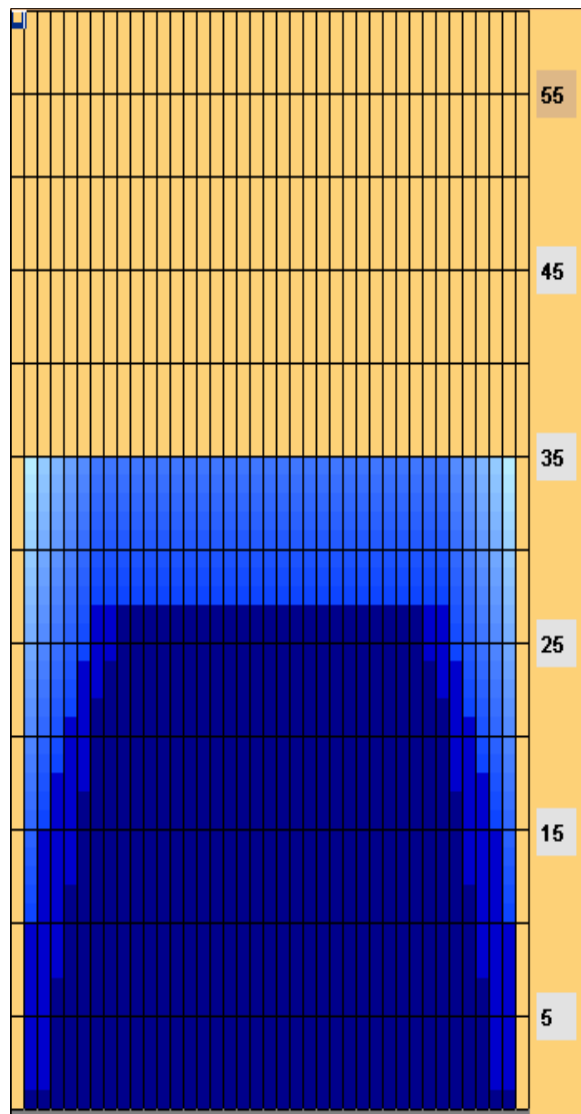
TransferType:
Transfer Brush

Forward

Reverse

Combined

Buff



Item	3L-7L:18L-18R	8L-12L:18L-18R	13L-17L:18L-18R	18L-18R:17R-13R	18L-18R:12R-8R	18L-18R:7R-3R
Description	Outside Track:Middle	Middle Track:Middle	Inside Track:Middle	Middle: Inside Track	Middle:Middle Track	Middle:Outside Track
Track Zone Ratio	1.73	1.01	1	1	1.01	1.73

