

# Ebonite 2020 - krátké mazání



<b>Oil Pattern Distance:</b>	<b>35 Feet</b>	<b>Reverse Brush Drop:</b>	<b>35 Feet</b>	<b>Oil Per Board:</b>	<b>50 uL</b>
<b>Forward Oil Total:</b>	<b>13.35 mL</b>	<b>Reverse Oil Total:</b>	<b>13.35 mL</b>	<b>Volume Oil Total:</b>	<b>26.7 mL</b>
<b>Forward Boards Crossed:</b>	<b>267 Boards</b>	<b>Reverse Boards Crossed:</b>	<b>267 Boards</b>	<b>Total Boards Crossed:</b>	<b>534 Boards</b>

	Start	Stop	Loads	Speed	Crossed	Start	End	Feet	T.Oil
1	2L	2R	1	14	37	0.0	0.0	0.0	1850
2	5L	5R	2	18	62	0.0	5.1	5.1	3100
3	6L	6R	3	18	87	5.1	12.7	7.6	4350
4	7L	7R	3	18	81	12.7	20.3	7.6	4050
5	2L	2R	0	22	0	20.3	26.0	5.7	0
6	2L	2R	0	26	0	26.0	35.0	9.0	0

Navigation: Forward Reverse More

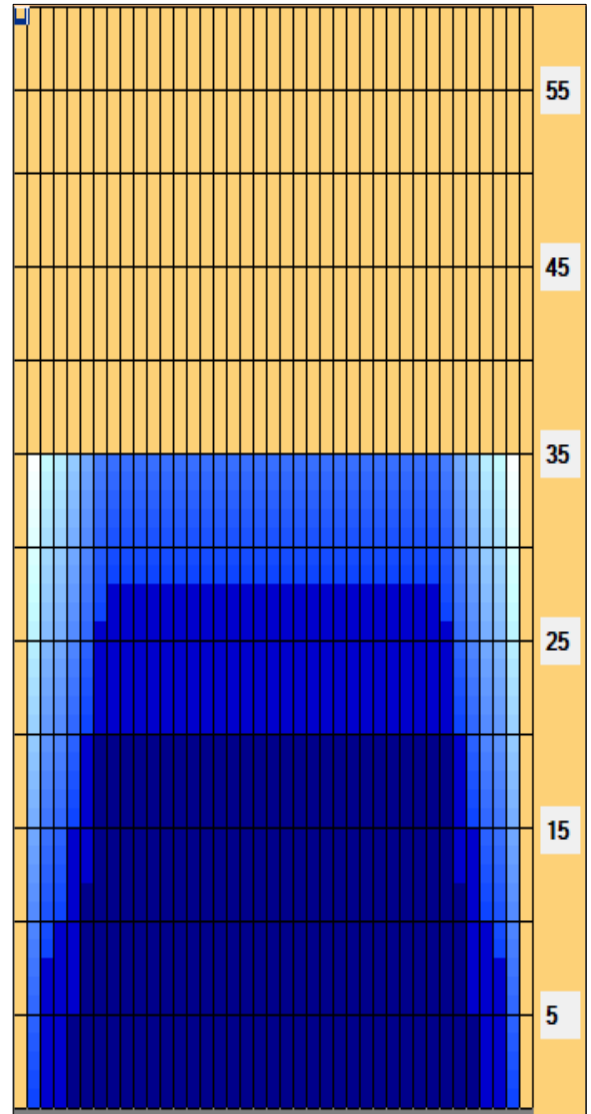
	Start	Stop	Loads	Speed	Crossed	Start	End	Feet	T.Oil
1	2L	2R	0	30	0	35.0	28.0	-7.0	0
2	8L	8R	1	18	25	28.0	25.5	-2.5	1250
3	7L	7R	2	18	54	25.5	20.4	-5.1	2700
4	6L	6R	2	18	58	20.4	15.3	-5.1	2900
5	5L	5R	2	18	62	15.3	10.2	-5.1	3100
6	4L	4R	1	14	33	10.2	8.3	-1.9	1650
7	3L	3R	1	14	35	8.3	6.4	-1.9	1750
8	2L	2R	0	14	0	6.4	0.0	-6.4	0

Navigation: Forward Reverse More

Conditioner:  
Current

TransferType:  
Transfer Roller

- Forward
- Reverse
- Combined
- Buff



Item	3L-7L:18L-18R	8L-12L:18L-18R	13L-17L:18L-18R	18L-18R:17R-13R	18L-18R:12R-8R	18L-18R:7R-3R
Description	Outside Track:Middle	Middle Track:Middle	Inside Track:Middle	Middle: Inside Track	Middle:Middle Track	Middle:Outside Track
Track Zone Ratio	2.2	1	1	1	1	2.2

