

# STORM - krátké mazání



Oil Pattern Distance: <b>35 Feet</b>	Reverse Brush Drop: <b>35 Feet</b>	Oil Per Board: <b>40 uL</b>
Forward Oil Total: <b>16.12 mL</b>	Reverse Oil Total: <b>8.2 mL</b>	Volume Oil Total: <b>24.32 mL</b>
Forward Boards Crossed: <b>403 Boards</b>	Reverse Boards Crossed: <b>205 Boards</b>	Total Boards Crossed: <b>608 Boards</b>

	Start	Stop	Loads	Speed	Crossed	Start	End	Feet	T.Oil
1	2L	2R	2	14	74	0.0	1.9	1.9	2960
2	3L	3R	1	14	35	1.9	3.8	1.9	1400
3	4L	4R	1	14	33	3.8	5.7	1.9	1320
4	5L	5R	3	14	93	5.7	11.6	5.9	3720
5	6L	6R	3	18	87	11.6	19.2	7.6	3480
6	7L	7R	3	18	81	19.2	26.8	7.6	3240
7	2L	2R	0	22	0	26.8	35.0	8.2	0

Navigation: Forward Reverse More

	Start	Stop	Loads	Speed	Crossed	Start	End	Feet	T.Oil
1	2L	2R	0	26	0	35.0	22.0	-13.0	0
2	8L	8R	1	18	25	22.0	19.5	-2.5	1000
3	7L	7R	2	18	54	19.5	14.4	-5.1	2160
4	6L	6R	2	14	58	14.4	10.5	-3.9	2320
5	5L	5R	1	14	31	10.5	8.6	-1.9	1240
6	2L	2R	1	14	37	8.6	6.7	-1.9	1480
7	2L	2R	0	14	0	6.7	0.0	-6.7	0

Navigation: Forward Reverse More

Conditioner: Fire

TransferType:  
Transfer Roller

Forward



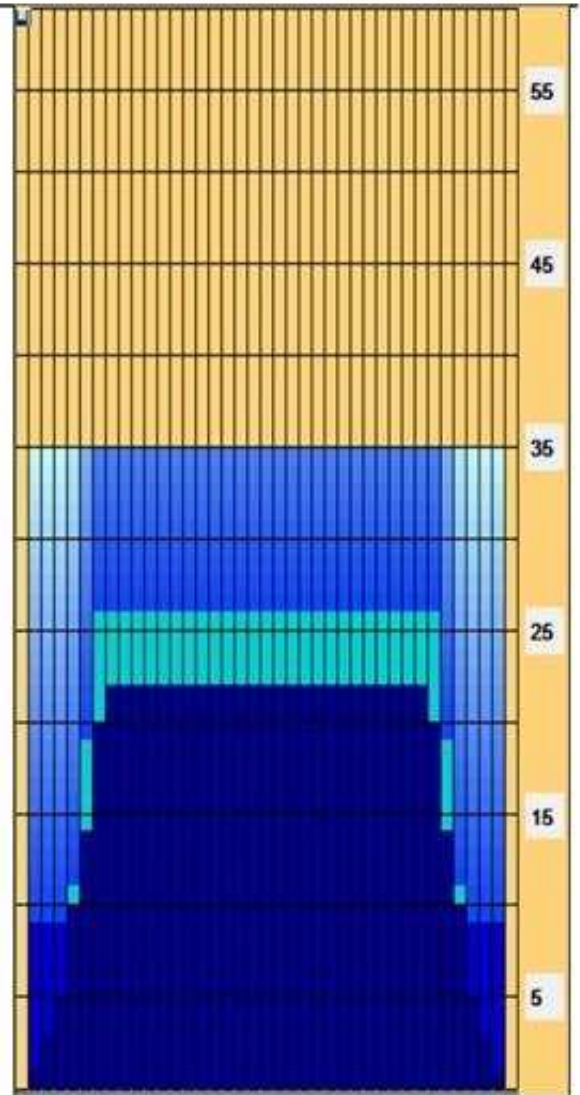
Reverse



Combined



Buff



Item	3L-7L:18L-18R	8L-12L:16L-16R	13L-17L:18L-18R	18L-18R:17R-13R	18L-18R:12R-6R	18L-18R:7R-3R
Description	Outside Track:Middle	Middle Track:Middle	Inside Track:Middle	Middle: Inside Track	Middle:Middle Track	Middle:Outside Track
Track Zone Ratio	1.96	1	1	1	1	1.96

