

Ebonite Tour 9. turnaj - Krátké mazání



Oil Pattern Distance:	35 Feet	Reverse Brush Drop:	35 Feet	Oil Per Board:	40 uL
Forward Oil Total:	14.48 mL	Reverse Oil Total:	8.04 mL	Volume Oil Total:	22.52 mL
Forward Boards Crossed:	362 Boards	Reverse Boards Crossed:	201 Boards	Total Boards Crossed:	563 Boards

	Start	Stop	Loads	Speed	Crossed	Start	End	Feet	T.Oil
1	2L	2R	1	18	37	0.0	0.0	0.0	1480
2	3L	4R	1	14	34	0.0	1.9	1.9	1360
3	4L	4R	1	14	33	1.9	3.8	1.9	1320
4	5L	5R	3	14	93	3.8	9.7	5.9	3720
5	6L	6R	3	18	87	9.7	17.3	7.6	3480
6	8L	7R	3	18	78	17.3	24.9	7.6	3120
7	2L	2R	0	22	0	24.9	35.0	10.1	0

Conditioner: Fire

TransferType:
Transfer Roller

Forward



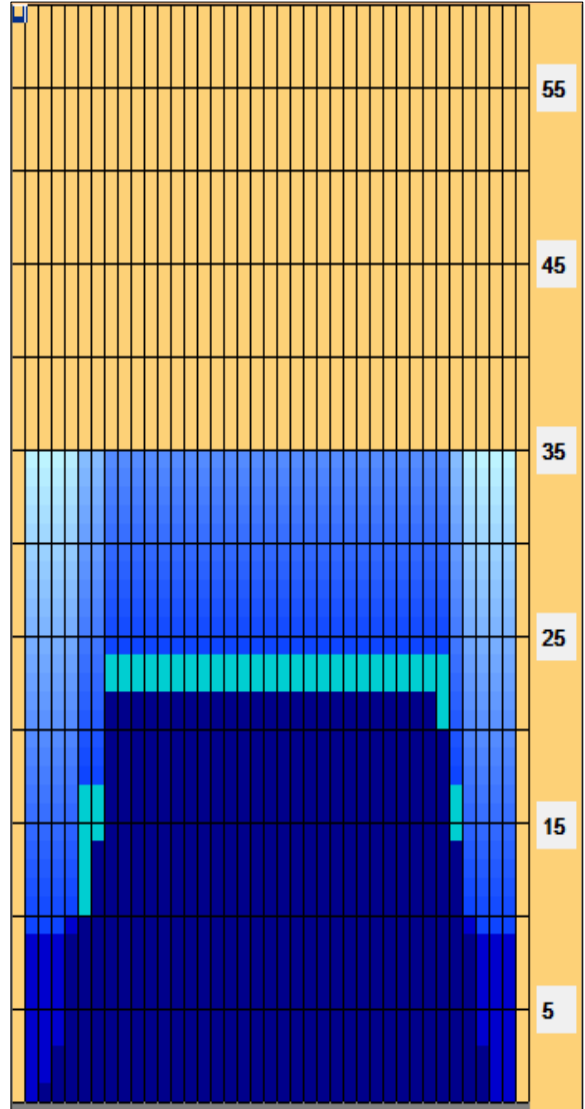
Reverse



Combined



Buff



Navigation: Forward Reverse More

	Start	Stop	Loads	Speed	Crossed	Start	End	Feet	T.Oil
1	2L	2R	0	26	0	35.0	22.0	-13.0	0
2	8L	8R	1	18	25	22.0	19.5	-2.5	1000
3	8L	7R	2	18	52	19.5	14.4	-5.1	2080
4	7L	6R	2	14	56	14.4	10.5	-3.9	2240
5	5L	5R	1	14	31	10.5	8.6	-1.9	1240
6	2L	2R	1	14	37	8.6	6.7	-1.9	1480
7	2L	2R	0	14	0	6.7	0.0	-6.7	0

Navigation: Forward Reverse More

Item	3L-7L:18L-18R	8L-12L:18L-18R	13L-17L:18L-18R	18L-18R:17R-13R	18L-18R:12R-8R	18L-18R:7R-3R
Description	Outside Track:Middle	Middle Track:Middle	Inside Track:Middle	Middle:Inside Track	Middle:Middle Track	Middle:Outside Track
Track Zone Ratio	2.44	1	1	1	1	2.11

