

STORM Prague Cup - duben 2022



Oil Pattern Distance: 35 Feet **Reverse Brush Drop:** 35 Feet **Oil Per Board:** 50 uL
Forward Oil Total: 19.25 mL **Reverse Oil Total:** 6.65 mL **Volume Oil Total:** 25.9 mL
Forward Boards Crossed: 385 Boards **Reverse Boards Crossed:** 133 Boards **Total Boards Crossed:** 518 Boards

	Start	Stop	Loads	Speed	Crossed	Start	End	Feet	T.Oil
1	2L	2R	1	14	37	0.0	0.0	0.0	1850
2	3L	3R	1	14	35	0.0	1.9	1.9	1750
3	4L	4R	1	14	33	1.9	3.8	1.9	1650
4	5L	5R	2	18	62	3.8	8.9	5.1	3100
5	6L	6R	3	18	87	8.9	16.5	7.6	4350
6	7L	7R	3	18	81	16.5	24.1	7.6	4050
7	8L	8R	2	18	50	24.1	29.2	5.1	2500
8	2L	2R	0	22	0	29.2	35.0	5.8	0

Navigation: Forward Reverse More

	Start	Stop	Loads	Speed	Crossed	Start	End	Feet	T.Oil
1	2L	2R	0	30	0	35.0	22.0	-13.0	0
2	8L	8R	2	18	50	22.0	16.9	-5.1	2500
3	7L	7R	2	18	54	16.9	11.8	-5.1	2700
4	6L	6R	1	14	29	11.8	9.9	-1.9	1450
5	2L	2R	0	14	0	9.9	0.0	-9.9	0

Navigation: Forward Reverse More

Conditioner:
Terrain

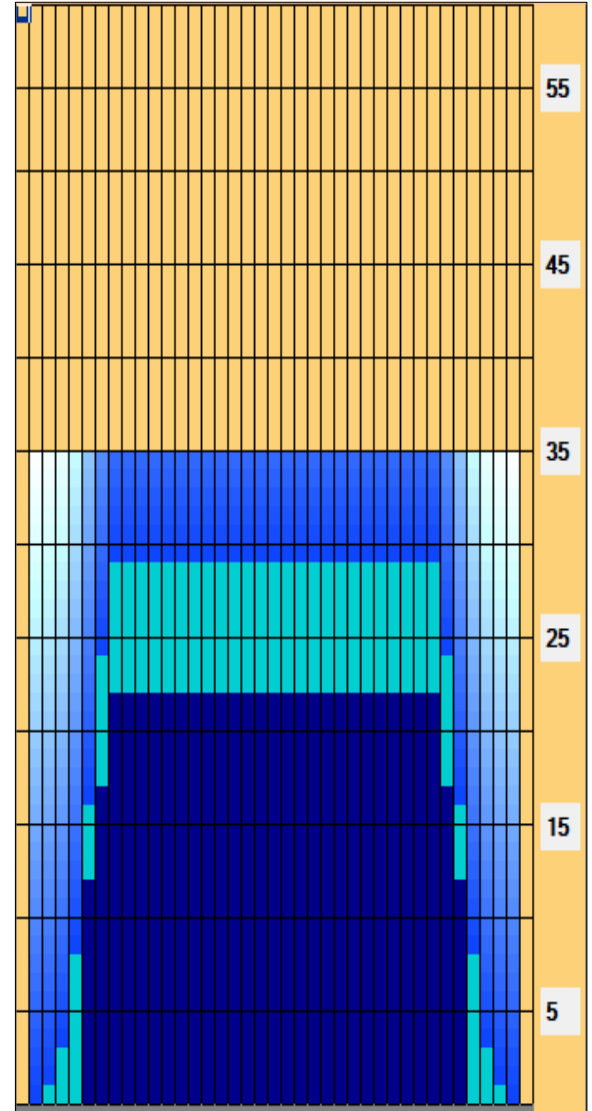
TransferType:
Transfer Roller

Forward

Reverse

Combined

Buff



Item Description	3L-7L:18L-18R Outside Track:Middle	8L-12L:18L-18R Middle Track:Middle	13L-17L:18L-18R Inside Track:Middle	18L-18R:17R-13R Middle: Inside Track	18L-18R:12R-8R Middle:Middle Track	18L-18R:7R-3R Middle:Outside Track
Track Zone Ratio	2.73	1	1	1	1	2.73

