

# Roto Grip MBC - krátké mazání



**Oil Pattern Distance:** 35 Feet      **Reverse Brush Drop:** 35 Feet      **Oil Per Board:** 50 uL  
**Forward Oil Total:** 13.95 mL      **Reverse Oil Total:** 10.45 mL      **Volume Oil Total:** 24.4 mL  
**Forward Boards Crossed:** 279 Boards      **Reverse Boards Crossed:** 209 Boards      **Total Boards Crossed:** 488 Boards

	Start	Stop	Loads	Speed	Crossed	Start	End	Feet	T.Oil
1	2L	2R	2	10	74	0.0	1.4	1.4	3700
2	4L	4R	2	14	66	1.4	5.3	3.9	3300
3	5L	5R	2	18	62	5.3	10.4	5.1	3100
4	7L	7R	1	18	27	10.4	12.9	2.5	1350
5	8L	8R	2	18	50	12.9	18.0	5.1	2500
6	2L	2R	0	22	0	18.0	35.0	17.0	0

Navigation: Forward Reverse More

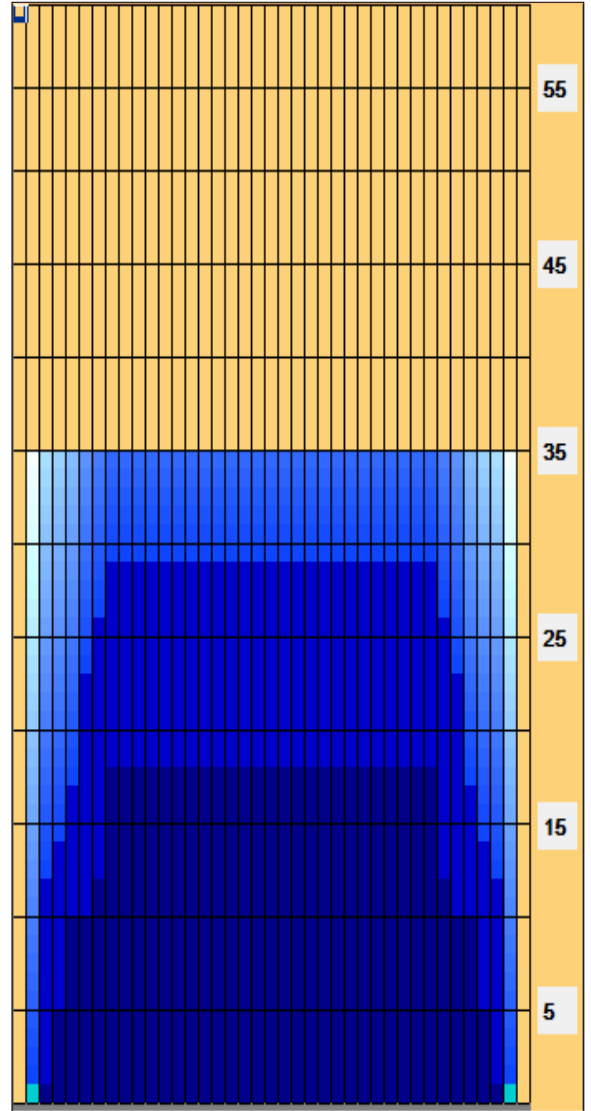
	Start	Stop	Loads	Speed	Crossed	Start	End	Feet	T.Oil
1	2L	2R	0	30	0	35.0	29.0	-6.0	0
2	8L	8R	1	22	25	29.0	25.9	-3.1	1250
3	7L	7R	1	22	27	25.9	22.8	-3.1	1350
4	6L	6R	2	22	58	22.8	16.6	-6.2	2900
5	5L	5R	1	18	31	16.6	14.1	-2.5	1550
6	4L	4R	1	18	33	14.1	11.6	-2.5	1650
7	3L	3R	1	18	35	11.6	9.1	-2.5	1750
8	2L	2R	0	18	0	9.1	0.0	-9.1	0

Navigation: Forward Reverse More

Conditioner: Fire

TransferType:  
Transfer Roller

- Forward
- Reverse
- Combined
- Buff



Item	3L-7L:18L-18R	8L-12L:18L-18R	13L-17L:18L-18R	18L-18R:17R-13R	18L-18R:12R-8R	18L-18R:7R-3R
Description	Outside Track:Middle	Middle Track:Middle	Inside Track:Middle	Middle: Inside Track	Middle:Middle Track	Middle:Outside Track
Track Zone Ratio	1.9	1	1	1	1	1.9

