

# MČR juniorů 2017 - 1.den (kat. 13-15 let a 16-18 let)



Oil Pattern Distance: **40 Feet**  
 Forward Oil Total: **16.6 mL**  
 Forward Boards Crossed: **332 Boards**

Reverse Brush Drop: **40 Feet**  
 Reverse Oil Total: **7.6 mL**  
 Reverse Boards Crossed: **152 Boards**

Oil Per Board: **50 uL**  
 Volume Oil Total: **24.2 mL**  
 Total Boards Crossed: **484 Boards**

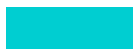
	Start	Stop	Loads	Speed	Crossed	Start	End	Feet	T.Oil
1	2L	2R	2	14	74	0.0	1.9	1.9	3700
2	4L	4R	1	14	33	1.9	3.8	1.9	1650
3	5L	5R	1	14	31	3.8	5.7	1.9	1550
4	6L	6R	1	14	29	5.7	7.6	1.9	1450
5	7L	7R	1	14	27	7.6	9.5	1.9	1350
6	9L	9R	2	14	46	9.5	13.4	3.9	2300
7	11L	11R	2	18	38	13.4	18.5	5.1	1900
8	13L	13R	2	18	30	18.5	23.6	5.1	1500
9	14L	14R	1	18	13	23.6	26.1	2.5	650
10	15L	15R	1	18	11	26.1	28.6	2.5	550
11	2L	2R	0	18	0	28.6	31.0	2.4	0
12	2L	2R	0	26	0	31.0	40.0	9.0	0

	Start	Stop	Loads	Speed	Crossed	Start	End	Feet	T.Oil
1	2L	2R	0	30	0	40.0	22.0	-18.0	0
2	12L	12R	1	18	17	22.0	19.5	-2.5	850
3	10L	10R	1	18	21	19.5	17.0	-2.5	1050
4	8L	8R	1	18	25	17.0	14.5	-2.5	1250
5	7L	7R	1	18	27	14.5	12.0	-2.5	1350
6	6L	6R	1	14	29	12.0	10.1	-1.9	1450
7	4L	4R	1	14	33	10.1	8.2	-1.9	1650
8	2L	2R	0	14	0	8.2	0.0	-8.2	0

Conditioner: Fire

TransferType:  
Transfer Roller

Forward



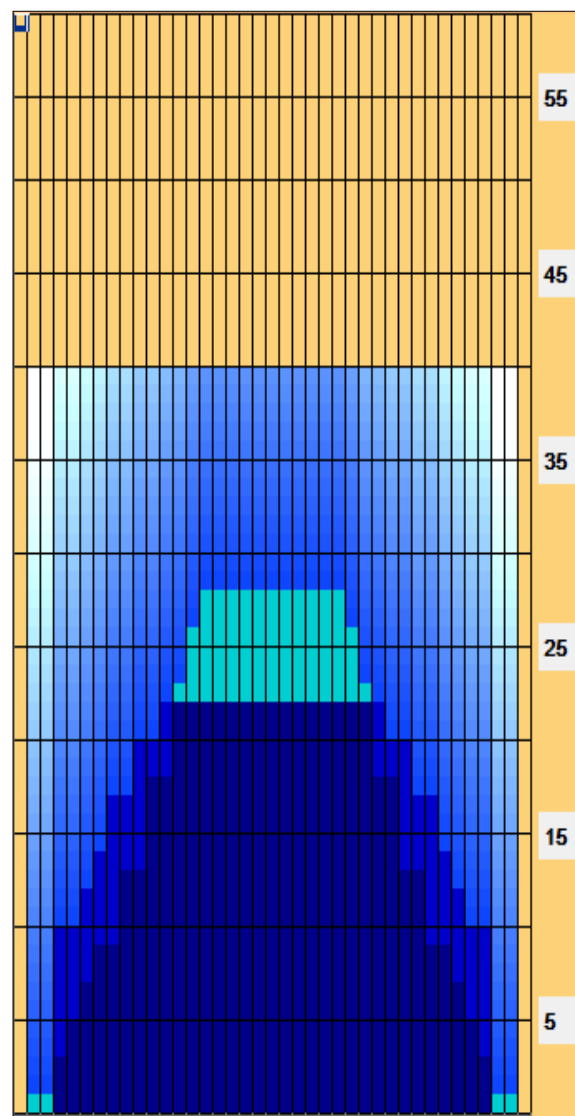
Reverse



Combined



Buff



Item	3L-7L:18L-18R	8L-12L:18L-18R	13L-17L:18L-18R	18L-18R:17R-13R	18L-18R:12R-8R	18L-18R:7R-3R
Description	Outside Track:Middle	Middle Track:Middle	Inside Track:Middle	Middle: Inside Track	Middle:Middle Track	Middle:Outside Track
Track Zone Ratio	3.7	1.52	1.03	1.03	1.52	3.7

