

# 2008 PABCON Senior Championships - Roto Grip MBC řjen



**Oil Pattern Distance:** 35 Feet      **Reverse Brush Drop:** 35 Feet      **Oil Per Board:** 40 uL  
**Forward Oil Total:** 8.44 mL      **Reverse Oil Total:** 11.76 mL      **Volume Oil Total:** 20.2 mL  
**Forward Boards Crossed:** 211 Boards      **Reverse Boards Crossed:** 294 Boards      **Total Boards Crossed:** 505 Boards

	Start	Stop	Loads	Speed	Crossed	Start	End	Feet	T.Oil
1	2L	2R	1	14	37	0.0	0.0	0.0	1480
2	5L	5R	2	18	62	0.0	5.1	5.1	2480
3	6L	6R	2	18	58	5.1	10.2	5.1	2320
4	7L	7R	2	18	54	10.2	15.3	5.1	2160
5	2L	2R	0	18	0	15.3	22.0	6.7	0
6	2L	2R	0	26	0	22.0	35.0	13.0	0

Conditioner: Fire  
TransferType: Transfer Roller

Forward  
Reverse  
More

	Start	Stop	Loads	Speed	Crossed	Start	End	Feet	T.Oil
1	2L	2R	0	30	0	35.0	28.0	-7.0	0
2	8L	8R	2	18	50	28.0	22.9	-5.1	2000
3	7L	7R	2	14	54	22.9	19.0	-3.9	2160
4	6L	6R	2	14	58	19.0	15.1	-3.9	2320
5	5L	5R	2	14	62	15.1	11.2	-3.9	2480
6	3L	3R	2	14	70	11.2	7.3	-3.9	2800
7	2L	2R	0	10	0	7.3	0.0	-7.3	0

Forward  
Reverse  
More

Conditioner: Fire

TransferType:  
Transfer Roller

Forward



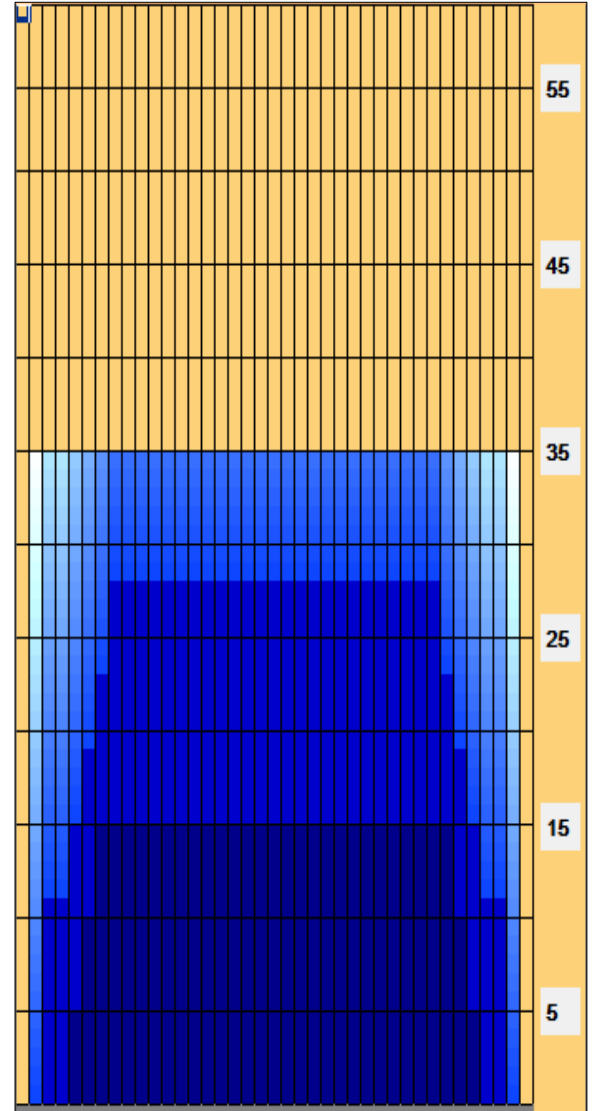
Reverse



Combined



Buff



Item	3L-7L:18L-18R	8L-12L:18L-18R	13L-17L:18L-18R	18L-18R:17R-13R	18L-18R:12R-8R	18L-18R:7R-3R
Description	Outside Track:Middle	Middle Track:Middle	Inside Track:Middle	Middle: Inside Track	Middle:Middle Track	Middle:Outside Track
Track Zone Ratio	2.18	1	1	1	1	2.18

