

Extraliga ČBL sk. B - 1. kolo



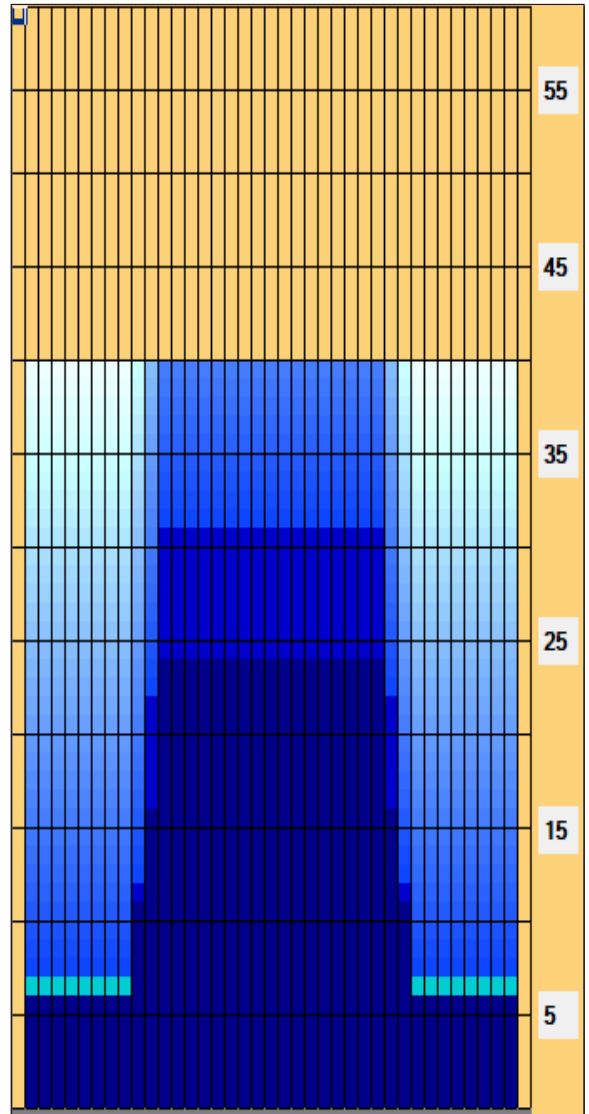
Oil Pattern Distance:	40 Feet	Reverse Brush Drop:	40 Feet	Oil Per Board:	50 uL
Forward Oil Total:	15.8 mL	Reverse Oil Total:	11.2 mL	Volume Oil Total:	27 mL
Forward Boards Crossed:	316 Boards	Reverse Boards Crossed:	224 Boards	Total Boards Crossed:	540 Boards

	Start	Stop	Loads	Speed	Crossed	Start	End	Feet	T.Oil
1	2L	2R	5	14	185	0.0	7.9	7.9	9250
2	10L	10R	2	14	42	7.9	11.8	3.9	2100
3	11L	11R	2	18	38	11.8	16.9	5.1	1900
4	12L	12R	3	18	51	16.9	24.5	7.6	2550
5	2L	2R	0	18	0	24.5	30.0	5.5	0
6	2L	2R	0	30	0	30.0	40.0	10.0	0

Conditioner: Terrain
TransferType: Transfer Roller

Forward
Reverse
Combined
Buff

	Start	Stop	Loads	Speed	Crossed	Start	End	Feet	T.Oil
1	2L	2R	0	30	0	40.0	31.0	-9.0	0
2	12L	12R	3	22	51	31.0	21.7	-9.3	2550
3	11L	11R	3	22	57	21.7	12.4	-9.3	2850
4	10L	10R	2	22	42	12.4	6.2	-6.2	2100
5	2L	2R	2	14	74	6.2	2.3	-3.9	3700
6	2L	2R	0	14	0	2.3	0.0	-2.3	0



Only for wiper bar machines - transfer roller

Item	3L-7L:18L-18R	8L-12L:18L-18R	13L-17L:18L-18R	18L-18R:17R-13R	18L-18R:12R-8R	18L-18R:7R-3R
Description	Outside Track:Middle	Middle Track:Middle	Inside Track:Middle	Middle: Inside Track	Middle:Middle Track	Middle:Outside Track
Track Zone Ratio	3.14	1.75	1	1	1.75	3.14

