

Ebonite Tour 2014, 10. turnaj - dlouhé mazání



Oil Pattern Distance:	44 Feet	Reverse Brush Drop:	44 Feet	Oil Per Board:	50 uL
Forward Oil Total:	16.65 mL	Reverse Oil Total:	6.95 mL	Volume Oil Total:	23.6 mL
Forward Boards Crossed:	333 Boards	Reverse Boards Crossed:	139 Boards	Total Boards Crossed:	472 Boards

	Start	Stop	Loads	Speed	Crossed	Start	End	Feet	T.Oil
1	2L	2R	5	14	185	0.0	7.9	7.9	9250
2	10L	10R	1	14	21	7.9	9.8	1.9	1050
3	11L	11R	1	14	19	9.8	11.7	1.9	950
4	12L	12R	2	14	34	11.7	15.6	3.9	1700
5	14L	14R	4	18	52	15.6	25.8	10.2	2600
6	15L	15R	2	18	22	25.8	30.9	5.1	1100
7	2L	2R	0	26	0	30.9	44.0	13.1	0

Conditioner: Fire

TransferType:
Transfer Roller

Forward



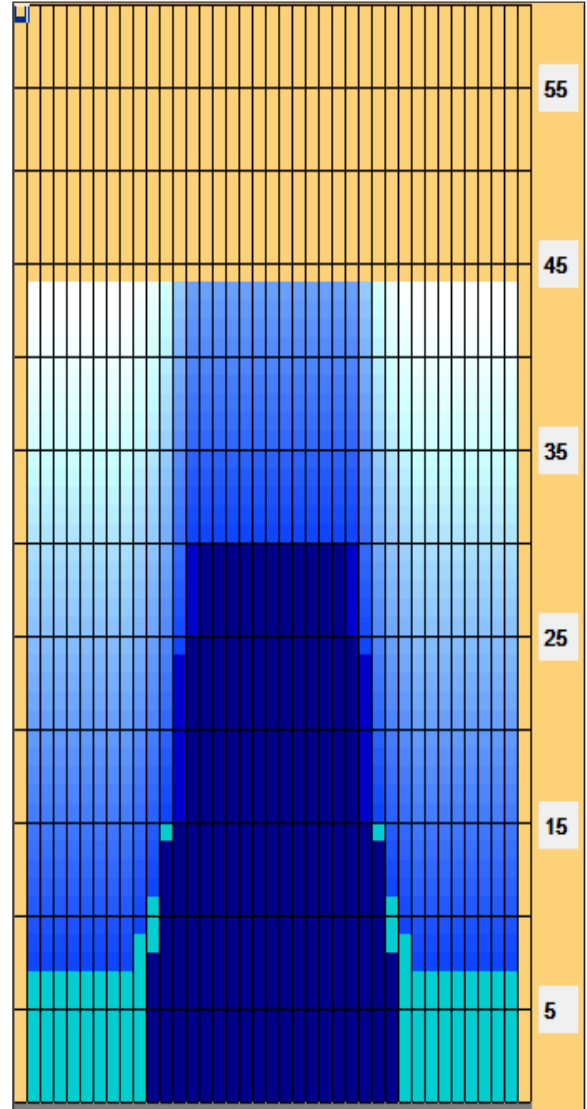
Reverse



Combined



Buff



Forward Reverse More

	Start	Stop	Loads	Speed	Crossed	Start	End	Feet	T.Oil
1	2L	2R	0	30	0	44.0	30.0	-14.0	0
2	14L	14R	2	22	26	30.0	23.8	-6.2	1300
3	13L	13R	4	18	60	23.8	13.6	-10.2	3000
4	12L	12R	2	18	34	13.6	8.5	-5.1	1700
5	11L	11R	1	18	19	8.5	6.0	-2.5	950
6	2L	2R	0	14	0	6.0	0.0	-6.0	0

Forward Reverse More

Item	3L-7L:18L-18R	8L-12L:18L-18R	13L-17L:18L-18R	18L-18R:17R-13R	18L-18R:12R-8R	18L-18R:7R-3R
Description	Outside Track:Middle	Middle Track:Middle	Inside Track:Middle	Middle:Inside Track	Middle:Middle Track	Middle:Outside Track
Track Zone Ratio	4.8	3.33	1.09	1.09	3.33	4.8

