

Ebonite Tour 2015 - 6. turnaj, krátké mazání



Oil Pattern Distance:	35 Feet	Reverse Brush Drop:	35 Feet	Oil Per Board:	50 uL
Forward Oil Total:	9.5 mL	Reverse Oil Total:	11.5 mL	Volume Oil Total:	21 mL
Forward Boards Crossed:	190 Boards	Reverse Boards Crossed:	230 Boards	Total Boards Crossed:	420 Boards

	Start	Stop	Loads	Speed	Crossed	Start	End	Feet	T.Oil
1	2L	2R	1	14	37	0.0	0.0	0.0	1850
2	4L	4R	1	18	33	0.0	2.5	2.5	1650
3	5L	5R	2	18	62	2.5	7.6	5.1	3100
4	6L	6R	2	22	58	7.6	13.8	6.2	2900
5	2L	2R	0	22	0	13.8	24.0	10.2	0
6	2L	2R	0	26	0	24.0	35.0	11.0	0

Navigation: Forward Reverse More

	Start	Stop	Loads	Speed	Crossed	Start	End	Feet	T.Oil
1	2L	2R	0	30	0	35.0	28.0	-7.0	0
2	8L	8R	2	22	50	28.0	21.8	-6.2	2500
3	7L	7R	2	18	54	21.8	16.7	-5.1	2700
4	6L	6R	2	18	58	16.7	11.6	-5.1	2900
5	5L	5R	1	14	31	11.6	9.7	-1.9	1550
6	2L	2R	1	14	37	9.7	7.8	-1.9	1850
7	2L	2R	0	14	0	7.8	0.0	-7.8	0

Navigation: Forward Reverse More

Conditioner:
Infinity

TransferType:
Transfer Roller

Forward



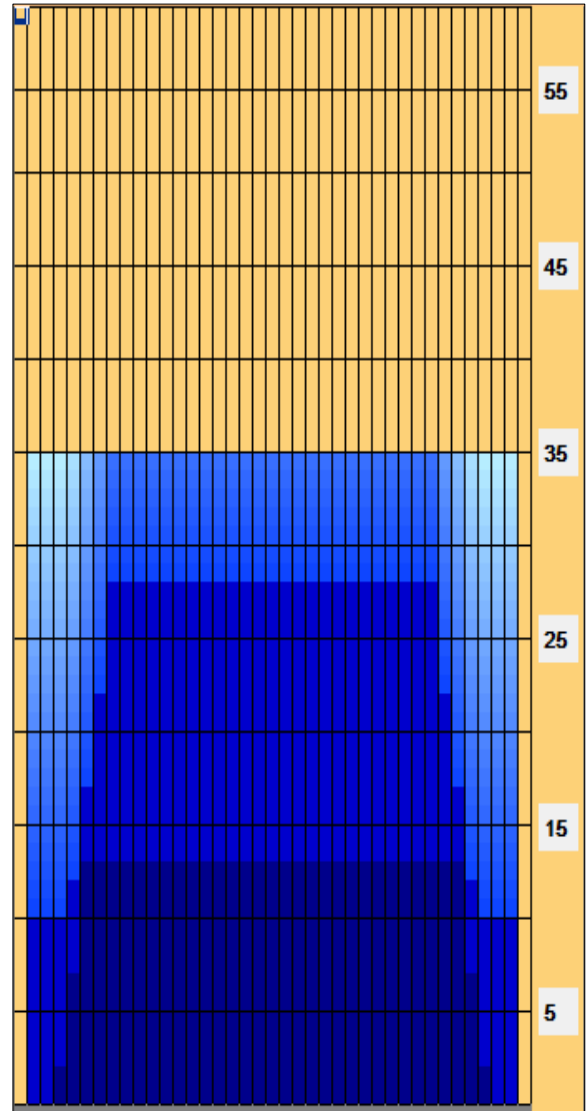
Reverse



Combined



Buff



Item	3L-7L:18L-18R	8L-12L:18L-18R	13L-17L:18L-18R	18L-18R:17R-13R	18L-18R:12R-8R	18L-18R:7R-3R
Description	Outside Track:Middle	Middle Track:Middle	Inside Track:Middle	Middle:Inside Track	Middle:Middle Track	Middle:Outside Track
Track Zone Ratio	2.12	1	1	1	1	2.12

