

# Ebonite Tour Říjen 2013 - krátké mazání



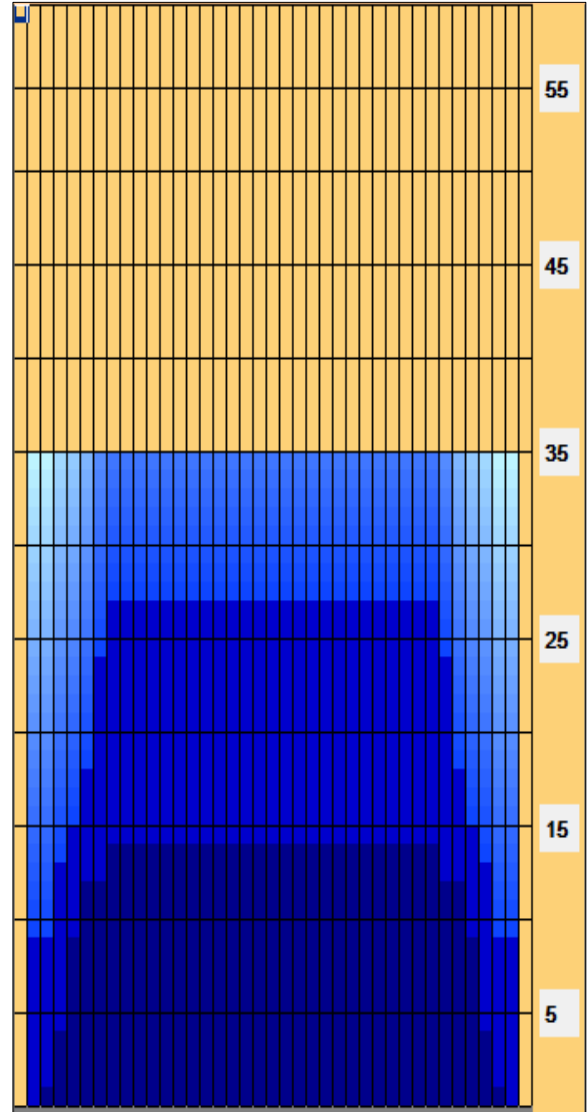
<b>Oil Pattern Distance:</b>	<b>35 Feet</b>	<b>Reverse Brush Drop:</b>	<b>35 Feet</b>	<b>Oil Per Board:</b>	<b>50 uL</b>
<b>Forward Oil Total:</b>	<b>11.05 mL</b>	<b>Reverse Oil Total:</b>	<b>12.1 mL</b>	<b>Volume Oil Total:</b>	<b>23.15 mL</b>
<b>Forward Boards Crossed:</b>	<b>221 Boards</b>	<b>Reverse Boards Crossed:</b>	<b>242 Boards</b>	<b>Total Boards Crossed:</b>	<b>463 Boards</b>

	Start	Stop	Loads	Speed	Crossed	Start	End	Feet	T.Oil
1	2L	2R	1	14	37	0.0	0.0	0.0	1850
2	3L	3R	1	14	35	0.0	1.9	1.9	1750
3	4L	4R	1	18	33	1.9	4.4	2.5	1650
4	5L	5R	2	18	62	4.4	9.5	5.1	3100
5	6L	6R	1	18	29	9.5	12.0	2.5	1450
6	8L	8R	1	18	25	12.0	14.5	2.5	1250
7	2L	2R	0	18	0	14.5	26.0	11.5	0
8	2L	2R	0	22	0	26.0	31.0	5.0	0
9	2L	2R	0	30	0	31.0	35.0	4.0	0

Conditioner: ICE  
TransferType: Transfer Roller

Forward  
Reverse  
Combined  
Buff

	Start	Stop	Loads	Speed	Crossed	Start	End	Feet	T.Oil
1	2L	2R	0	30	0	35.0	27.0	-8.0	0
2	8L	8R	1	22	25	27.0	23.9	-3.1	1250
3	7L	7R	2	22	54	23.9	17.7	-6.2	2700
4	6L	6R	1	18	29	17.7	15.2	-2.5	1450
5	5L	5R	1	18	31	15.2	12.7	-2.5	1550
6	4L	4R	2	14	66	12.7	8.8	-3.9	3300
7	2L	2R	1	14	37	8.8	6.9	-1.9	1850
8	2L	2R	0	14	0	6.9	0.0	-6.9	0



Item	3L-7L:18L-18R	8L-12L:18L-18R	13L-17L:18L-18R	18L-18R:17R-13R	18L-18R:12R-8R	18L-18R:7R-3R
Description	Outside Track:Middle	Middle Track:Middle	Inside Track:Middle	Middle:Inside Track	Middle:Middle Track	Middle:Outside Track
Track Zone Ratio	1.79	1	1	1	1	1.79

