

Roto Grip MBC - 2. turnaj



Oil Pattern Distance:	44 Feet	Reverse Brush Drop:	44 Feet	Oil Per Board:	50 uL
Forward Oil Total:	10.85 mL	Reverse Oil Total:	10.25 mL	Volume Oil Total:	21.1 mL
Forward Boards Crossed:	217 Boards	Reverse Boards Crossed:	205 Boards	Total Boards Crossed:	422 Boards

	Start	Stop	Loads	Speed	Crossed	Start	End	Feet	T.Oil
1	2L	2R	2	18	74	0.0	2.5	2.5	3700
2	9L	9R	2	18	46	2.5	7.6	5.1	2300
3	10L	10R	3	18	63	7.6	15.2	7.6	3150
4	12L	12R	2	18	34	15.2	20.3	5.1	1700
5	2L	2R	0	18	0	20.3	24.0	3.7	0
6	2L	2R	0	22	0	24.0	33.0	9.0	0
7	2L	2R	0	30	0	33.0	44.0	11.0	0

Conditioner: Fire

TransferType:
Transfer Roller

Forward



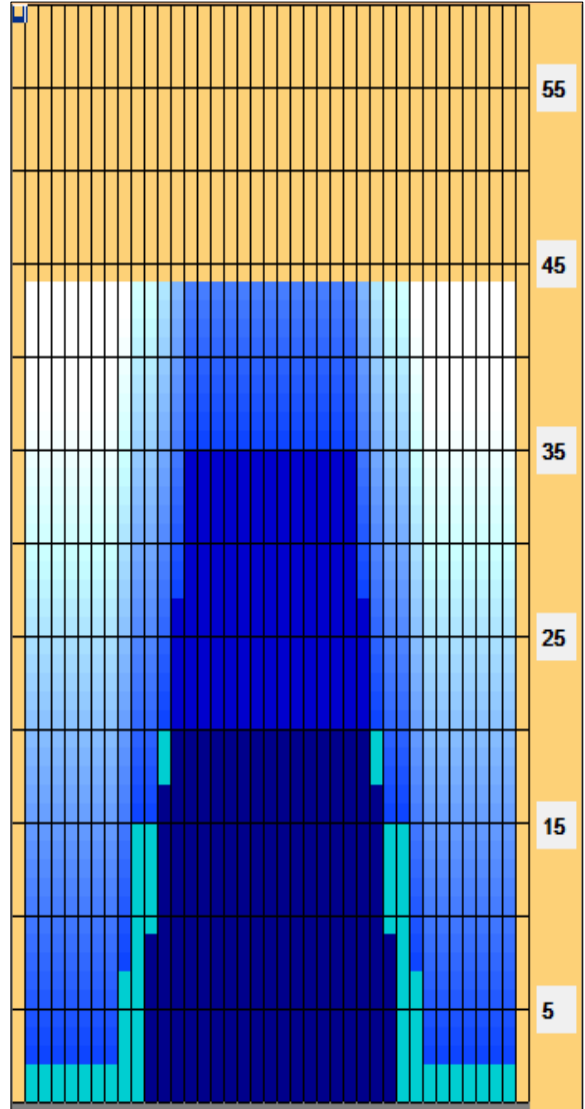
Reverse



Combined



Buff



Navigation: Forward Reverse More

	Start	Stop	Loads	Speed	Crossed	Start	End	Feet	T.Oil
1	2L	2R	0	30	0	44.0	35.0	-9.0	0
2	14L	14R	3	18	39	35.0	27.4	-7.6	1950
3	13L	13R	4	18	60	27.4	17.2	-10.2	3000
4	12L	12R	4	14	68	17.2	9.3	-7.9	3400
5	11L	11R	2	10	38	9.3	6.5	-2.8	1900
6	2L	2R	0	10	0	6.5	0.0	-6.5	0

Navigation: Forward Reverse More

Item	3L-7L:18L-18R	8L-12L:18L-18R	13L-17L:18L-18R	18L-18R:17R-13R	18L-18R:12R-8R	18L-18R:7R-3R
Description	Outside Track:Middle	Middle Track:Middle	Inside Track:Middle	Middle:Inside Track	Middle:Middle Track	Middle:Outside Track
Track Zone Ratio	11	2.97	1.03	1.03	2.97	11

