

22 Krátké mazání 1



Oil Pattern Distance:	35 Feet	Reverse Brush Drop:	35 Feet	Oil Per Board:	50 uL
Forward Oil Total:	17.65 mL	Reverse Oil Total:	5.5 mL	Volume Oil Total:	23.15 mL
Forward Boards Crossed:	353 Boards	Reverse Boards Crossed:	110 Boards	Total Boards Crossed:	463 Boards

	Start	Stop	Loads	Speed	Crossed	Start	End	Feet	T.Oil
1	2L	2R	2	10	74	0.0	1.4	1.4	3700
2	5L	5R	3	14	93	1.4	7.3	5.9	4650
3	6L	6R	2	14	58	7.3	11.2	3.9	2900
4	7L	6R	1	14	28	11.2	13.1	1.9	1400
5	8L	7R	2	18	52	13.1	18.2	5.1	2600
6	9L	8R	2	18	48	18.2	23.3	5.1	2400
7	2L	2R	0	18	0	23.3	30.0	6.7	0
8	2L	2R	0	26	0	30.0	35.0	5.0	0

Conditioner: Prodigy

TransferType: Transfer Brush

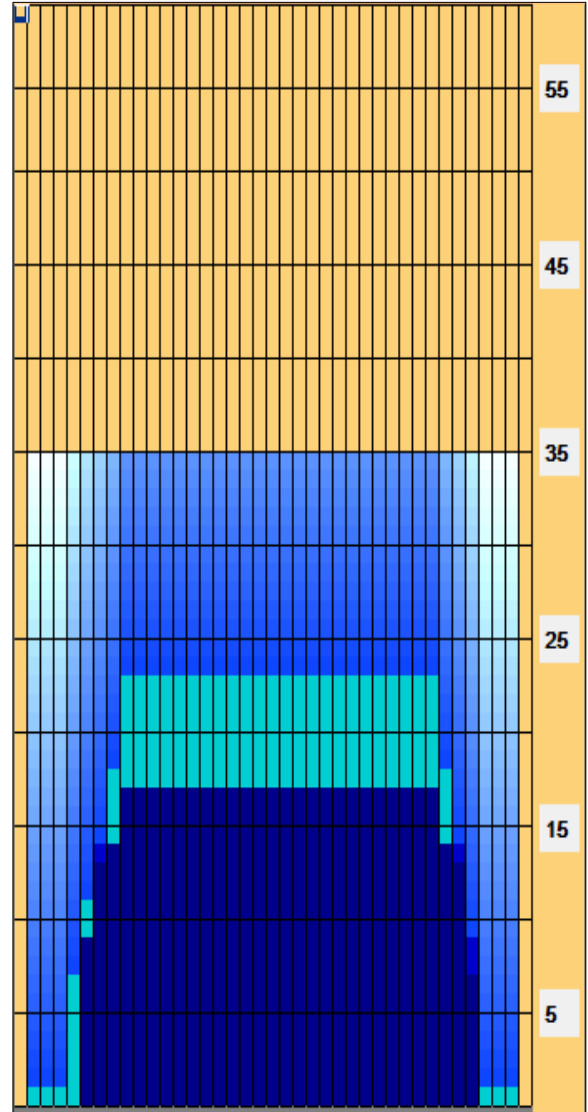
Forward

Reverse

Combined

Buff

	Start	Stop	Loads	Speed	Crossed	Start	End	Feet	T.Oil
1	2L	2R	0	26	0	35.0	17.0	-18.0	0
2	9L	8R	1	18	24	17.0	14.5	-2.5	1200
3	7L	6R	2	18	56	14.5	9.4	-5.1	2800
4	6L	5R	1	18	30	9.4	6.9	-2.5	1500
5	2L	2R	0	14	0	6.9	0.0	-6.9	0



This Pattern Up Loaded From Slot # 21 In Lane Machine On 5.2.2014 15:17

Item	3L-7L:18L-18R	8L-12L:18L-18R	13L-17L:18L-18R	18L-18R:17R-13R	18L-18R:12R-8R	18L-18R:7R-3R
Description	Outside Track:Middle	Middle Track:Middle	Inside Track:Middle	Middle:Inside Track	Middle:Middle Track	Middle:Outside Track
Track Zone Ratio	2.86	1.04	1	1	1	2.35

