

SBL 29.10.



Oil Per Board: 50 uL Oil Pattern Distance: 40 Feet Volume Oil Total: 22.75 mL Total Boards Crossed: 455 Boards

Forward Oil Total: 11.95 mL Reverse Oil Total: 10.8 mL
239 Boards 216 Boards

Notes

	Start	Stop	Loads	Speed	Crossed	Start	End	Feet	T.Oil
1	2L	2R	2	10	74	0.0	1.4	1.4	3700
2	10L	10R	3	10	63	1.4	5.6	4.2	3150
3	11L	11R	2	10	38	5.6	8.4	2.8	1900
4	12L	12R	2	14	34	8.4	12.3	3.9	1700
5	13L	13R	2	14	30	12.3	16.2	3.9	1500
6	2L	2R	0	22	0	16.2	34.0	17.8	0
7	2L	2R	0	30	0	34.0	40.0	6.0	0

Forward Reverse More Info

	Start	Stop	Loads	Speed	Crossed	Start	End	Feet	T.Oil
1	2L	2R	0	26	0	40.0	34.0	-6.0	0
2	13L	13R	3	18	45	34.0	26.4	-7.6	2250
3	12L	12R	3	18	51	26.4	18.8	-7.6	2550
4	11L	11R	3	18	57	18.8	11.2	-7.6	2850
5	10L	10R	3	14	63	11.2	5.3	-5.9	3150
6	2L	2R	0	10	0	5.3	0.0	-5.3	0

Forward Reverse More Info

Conditioner:
Type In or Select
One

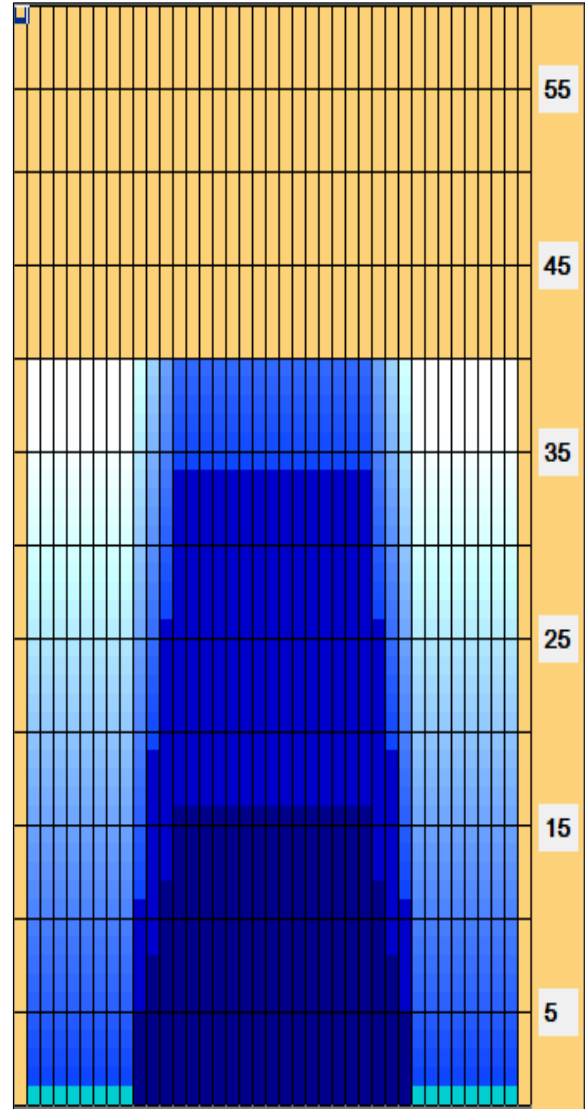
TransferType:
Type In or
Select One

Forward

Reverse

Combined

Buff



Arrow Zone
Ratios

Item	2-6L:16L-20	6-10L:16:-20	11-15L:16L-20	16L-20:20-16R	16L-20:20-16R	20-16R:15-11R	20-16R:10-6R	20-16R:5-2R
ul Arrow	100	160	1000	1150	1150	1000	160	100
Zone Ratio	11.5	7.19	1.15	1	1	1.15	7.19	11.5

Track Zone
Ratios

Item	3L-7L:18L-18R	8L-12L:18L-18R	13L-17L:18L-18R	18L-18R:17R-13R	18L-18R:12R-8R	18L-18R:7R-3R
Description	Outside Track:Middle	Middle Track:Middle	Inside Track:Middle	Middle: Inside Track	Middle:Middle Track	Middle:Outside Track
Track Zone Ratio	11.5	2.67	1	1	2.67	11.5

