

Juniorská Extraliga 2.kolo sk.A a B



Oil Per Board: 50 uL

Oil Pattern Distance: 39 Feet

Volume Oil Total: 22.7 mL

Total Boards Crossed: 454 Boards

Forward Oil Total:

13.95 mL
279 Boards

Reverse Oil Total:

8.75 mL
175 Boards

Notes

| | Start | Stop | Loads | Speed | Crossed | Start | End | Feet | T.Oil |
|----|-------|------|-------|-------|---------|-------|------|------|-------|
| 1 | 2L | 2R | 2 | 10 | 74 | 0.0 | 1.4 | 1.4 | 3700 |
| 2 | 6L | 6R | 2 | 14 | 58 | 1.4 | 5.3 | 3.9 | 2900 |
| 3 | 7L | 7R | 1 | 14 | 27 | 5.3 | 7.2 | 1.9 | 1350 |
| 4 | 8L | 8R | 1 | 14 | 25 | 7.2 | 9.1 | 1.9 | 1250 |
| 5 | 9L | 9R | 1 | 14 | 23 | 9.1 | 11.0 | 1.9 | 1150 |
| 6 | 10L | 10R | 1 | 18 | 21 | 11.0 | 13.5 | 2.5 | 1050 |
| 7 | 11L | 11R | 1 | 18 | 19 | 13.5 | 16.0 | 2.5 | 950 |
| 8 | 12L | 12R | 1 | 10 | 17 | 16.0 | 17.4 | 1.4 | 850 |
| 9 | 13L | 13R | 1 | 10 | 15 | 17.4 | 18.8 | 1.4 | 750 |
| 10 | 2L | 2R | 0 | 10 | 0 | 18.8 | 39.0 | 20.2 | 0 |

| | Start | Stop | Loads | Speed | Crossed | Start | End | Feet | T.Oil |
|---|-------|------|-------|-------|---------|-------|------|-------|-------|
| 1 | 2L | 2R | 0 | 30 | 0 | 39.0 | 26.0 | -13.0 | 0 |
| 2 | 11L | 11R | 1 | 18 | 19 | 26.0 | 23.5 | -2.5 | 950 |
| 3 | 10L | 10R | 1 | 14 | 21 | 23.5 | 21.6 | -1.9 | 1050 |
| 4 | 9L | 9R | 1 | 14 | 23 | 21.6 | 19.7 | -1.9 | 1150 |
| 5 | 8L | 8R | 1 | 14 | 25 | 19.7 | 17.8 | -1.9 | 1250 |
| 6 | 7L | 7R | 1 | 14 | 27 | 17.8 | 15.9 | -1.9 | 1350 |
| 7 | 6L | 6R | 1 | 10 | 29 | 15.9 | 14.5 | -1.4 | 1450 |
| 8 | 5L | 5R | 1 | 10 | 31 | 14.5 | 13.1 | -1.4 | 1550 |
| 9 | 2L | 2R | 0 | 10 | 0 | 13.1 | 0.0 | -13.1 | 0 |

Conditioner:
Type In or Select One

TransferType:
Type In or Select One

Forward



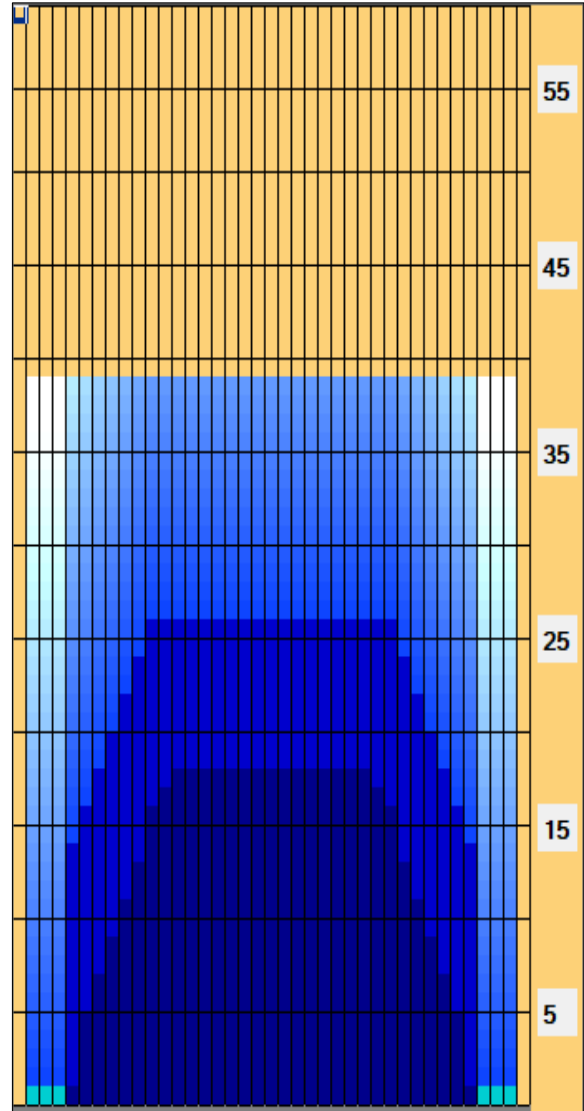
Reverse



Combined



Buff



Arrow Zone Ratios

| Item | 2-5L:16L-20 | 6-10L:16:20 | 11-15L:16L-20 | 16L-20:20-16R | 16L-20:20-16R | 20-16R:15-11R | 20-16R:10-6R | 20-16R:5-2R |
|------------|-------------|-------------|---------------|---------------|---------------|---------------|--------------|-------------|
| ul Arrow | 112.5 | 500 | 870 | 900 | 900 | 870 | 500 | 112.5 |
| Zone Ratio | 8 | 1.8 | 1.03 | 1 | 1 | 1.03 | 1.8 | 8 |

Track Zone Ratios

| Item | 3L-7L:18L-18R | 8L-12L:18L-18R | 13L-17L:18L-18R | 18L-18R:17R-13R | 18L-18R:12R-8R | 18L-18R:7R-3R |
|------------------|----------------------|---------------------|---------------------|----------------------|---------------------|----------------------|
| Description | Outside Track:Middle | Middle Track:Middle | Inside Track:Middle | Middle: Inside Track | Middle:Middle Track | Middle:Outside Track |
| Track Zone Ratio | 4.29 | 1.3 | 1 | 1 | 1.3 | 4.29 |

