

TURNPIKE



| | | | | | |
|-------------------------|------------|-------------------------|------------|-----------------------|------------|
| Oil Pattern Distance: | 41 Feet | Reverse Brush Drop: | 41 Feet | Oil Per Board: | 50 uL |
| Forward Oil Total: | 11.1 mL | Reverse Oil Total: | 14.2 mL | Volume Oil Total: | 25.3 mL |
| Forward Boards Crossed: | 222 Boards | Reverse Boards Crossed: | 284 Boards | Total Boards Crossed: | 506 Boards |

| | Start | Stop | Loads | Speed | Crossed | Start | End | Feet | T.Oil |
|---|-------|------|-------|-------|---------|-------|------|------|-------|
| 1 | 2L | 2R | 6 | 18 | 222 | 0.0 | 12.7 | 12.7 | 11100 |
| 2 | 2L | 2R | 0 | 18 | 0 | 12.7 | 31.0 | 18.3 | 0 |
| 3 | 2L | 2R | 0 | 26 | 0 | 31.0 | 36.0 | 5.0 | 0 |
| 4 | 2L | 2R | 0 | 30 | 0 | 36.0 | 41.0 | 5.0 | 0 |

Conditioner:
Type In or Select
One

TransferType:
Type In or Select
One

Forward

Reverse

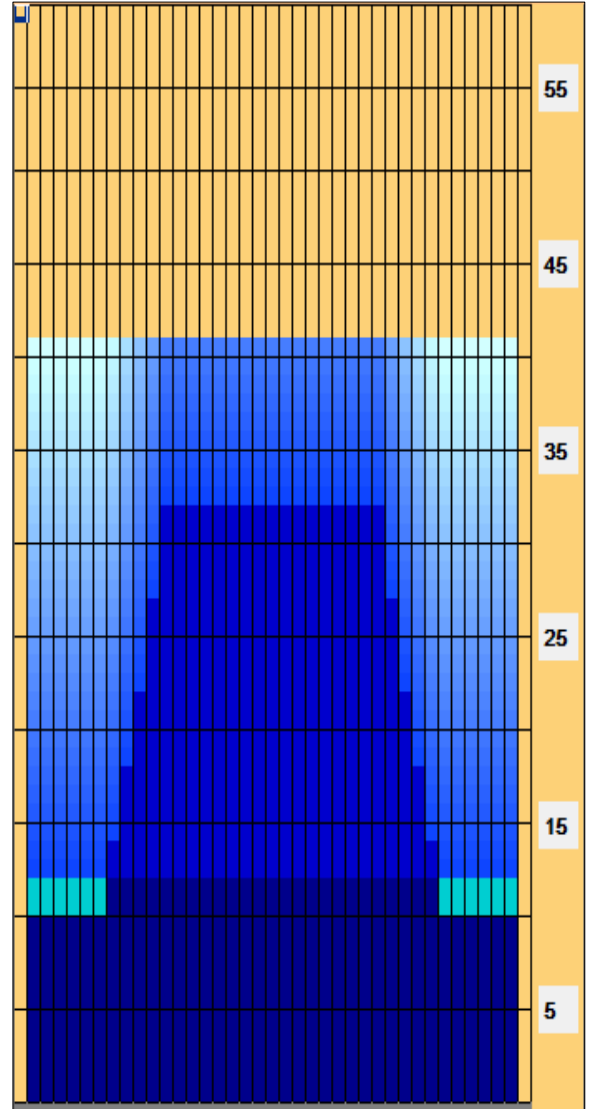
Combined

Buff

Forward Reverse More

| | Start | Stop | Loads | Speed | Crossed | Start | End | Feet | T.Oil |
|---|-------|------|-------|-------|---------|-------|------|------|-------|
| 1 | 2L | 2R | 0 | 30 | 0 | 41.0 | 32.0 | -9.0 | 0 |
| 2 | 12L | 12R | 2 | 18 | 34 | 32.0 | 26.9 | -5.1 | 1700 |
| 3 | 11L | 11R | 2 | 18 | 38 | 26.9 | 21.8 | -5.1 | 1900 |
| 4 | 10L | 10R | 2 | 14 | 42 | 21.8 | 17.9 | -3.9 | 2100 |
| 5 | 9L | 9R | 2 | 14 | 46 | 17.9 | 14.0 | -3.9 | 2300 |
| 6 | 8L | 8R | 2 | 14 | 50 | 14.0 | 10.1 | -3.9 | 2500 |
| 7 | 2L | 2R | 2 | 14 | 74 | 10.1 | 6.2 | -3.9 | 3700 |
| 8 | 2L | 2R | 0 | 10 | 0 | 6.2 | 0.0 | -6.2 | 0 |

Forward Reverse More



| Item | 3L-7L:18L-18R | 8L-12L:18L-18R | 13L-17L:18L-18R | 18L-18R:17R-13R | 18L-18R:12R-8R | 18L-18R:7R-3R |
|------------------|----------------------|---------------------|---------------------|----------------------|---------------------|----------------------|
| Description | Outside Track:Middle | Middle Track:Middle | Inside Track:Middle | Middle: Inside Track | Middle:Middle Track | Middle:Outside Track |
| Track Zone Ratio | 2.25 | 1.29 | 1 | 1 | 1.29 | 2.25 |

