





ABT #1



Oil Pattern Distance: 34 Feet **Reverse Brush Drop:** 34 Feet **Oil Per Board:** 50 uL
Forward Oil Total: 14.85 mL **Reverse Oil Total:** 9.8 mL **Volume Oil Total:** 24.65 mL
Forward Boards Crossed: 297 Boards **Reverse Boards Crossed:** 196 Boards **Total Boards Crossed:** 493 Boards

	Start	Stop	Loads	Speed	Crossed	Start	End	Feet	T.Oil
1	2L	2R	2	14	74	0.0	1.9	1.9	3700
2	4L	4R	3	14	99	1.9	7.8	5.9	4950
3	5L	5R	4	18	124	7.8	18.0	10.2	6200
4	2L	2R	0	22	0	18.0	34.0	16.0	0

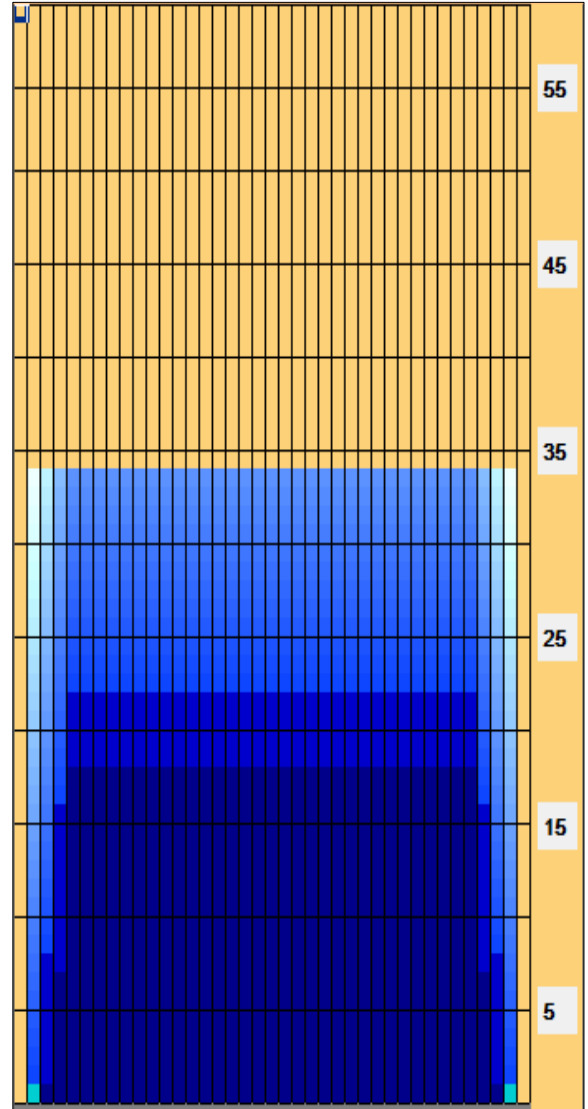
Conditioner: _____
 Type In or Select One
 TransferType: _____
 Type In or Select One

Forward

 Reverse

 Combined

 Buff


Forward Reverse More

	Start	Stop	Loads	Speed	Crossed	Start	End	Feet	T.Oil
1	2L	2R	0	30	0	34.0	22.0	-12.0	0
2	5L	5R	2	22	62	22.0	15.8	-6.2	3100
3	4L	4R	3	18	99	15.8	8.2	-7.6	4950
4	3L	3R	1	18	35	8.2	5.7	-2.5	1750
5	2L	2R	0	14	0	5.7	0.0	-5.7	0

Forward Reverse More



Item	3L-7L:18L-18R	8L-12L:18L-18R	13L-17L:18L-18R	18L-18R:17R-13R	18L-18R:12R-8R	18L-18R:7R-3R
Description	Outside Track:Middle	Middle Track:Middle	Inside Track:Middle	Middle:Inside Track	Middle:Middle Track	Middle:Outside Track
Track Zone Ratio	1.32	1	1	1	1	1.32

