

MČR juniorů 2017 - 2. den (kat. do 9 let a 10-12 let)



Oil Pattern Distance: **41 Feet**
 Forward Oil Total: **8.55 mL**
 Forward Boards Crossed: **171 Boards**

Reverse Brush Drop: **41 Feet**
 Reverse Oil Total: **10.75 mL**
 Reverse Boards Crossed: **215 Boards**

Oil Per Board: **50 uL**
 Volume Oil Total: **19.3 mL**
 Total Boards Crossed: **386 Boards**

	Start	Stop	Loads	Speed	Crossed	Start	End	Feet	T.Oil
1	2L	2R	2	18	74	0.0	2.5	2.5	3700
2	8L	8R	1	18	25	2.5	5.0	2.5	1250
3	10L	10R	2	18	42	5.0	10.1	5.1	2100
4	13L	13R	2	18	30	10.1	15.2	5.1	1500
5	2L	2R	0	18	0	15.2	24.0	8.8	0
6	2L	2R	0	22	0	24.0	33.0	9.0	0
7	2L	2R	0	30	0	33.0	41.0	8.0	0

Conditioner: Fire

TransferType: Transfer Roller

Forward Reverse More

	Start	Stop	Loads	Speed	Crossed	Start	End	Feet	T.Oil
1	2L	2R	0	30	0	41.0	35.0	-6.0	0
2	15L	15R	1	22	11	35.0	31.9	-3.1	550
3	14L	14R	2	18	26	31.9	26.8	-5.1	1300
4	13L	13R	4	18	60	26.8	16.6	-10.2	3000
5	11L	11R	4	14	76	16.6	8.7	-7.9	3800
6	10L	10R	2	10	42	8.7	5.9	-2.8	2100
7	2L	2R	0	10	0	5.9	0.0	-5.9	0

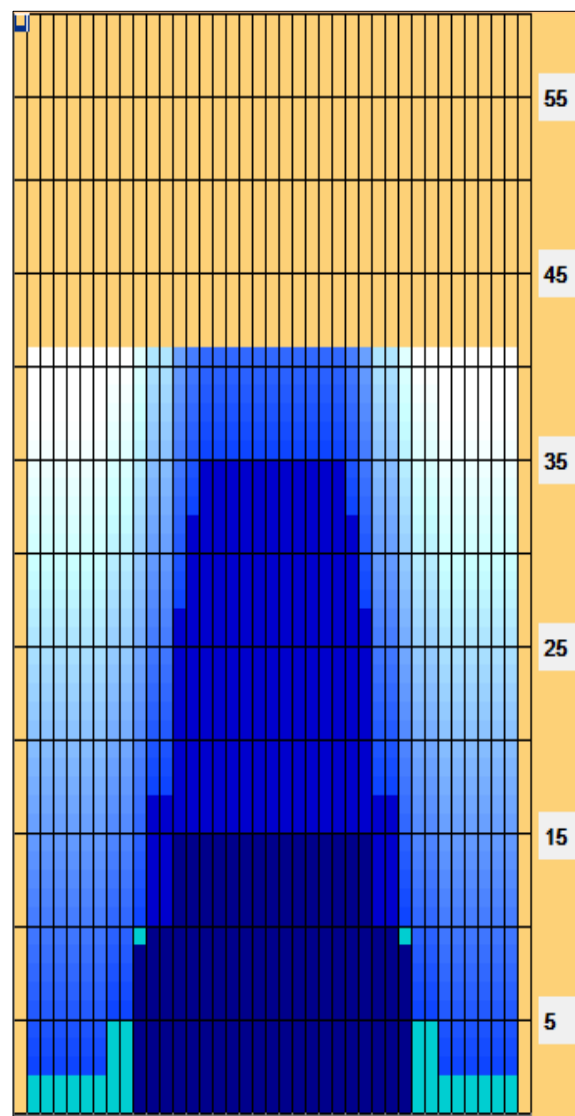
Forward Reverse More

Forward

Reverse

Combined

Buff



Item	3L-7L:18L-18R	8L-12L:18L-18R	13L-17L:18L-18R	18L-18R:17R-13R	18L-18R:12R-8R	18L-18R:7R-3R
Description	Outside Track:Middle	Middle Track:Middle	Inside Track:Middle	Middle: Inside Track	Middle:Middle Track	Middle:Outside Track
Track Zone Ratio	10	2.86	1.04	1.04	2.86	10

