

# MBC 1. turnaj 2015



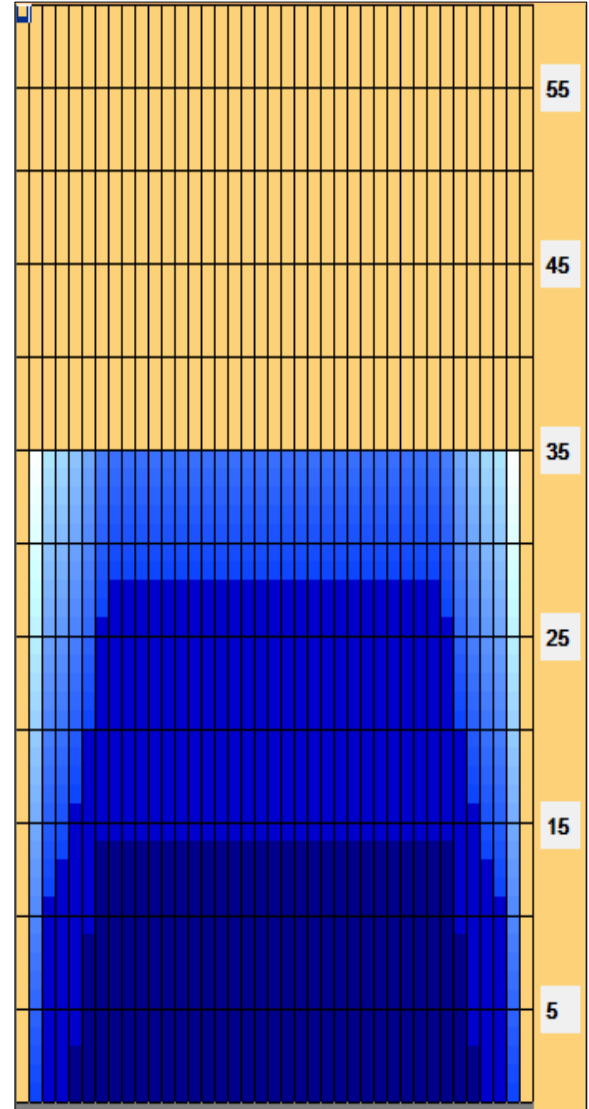
<b>Oil Pattern Distance:</b>	<b>35 Feet</b>	<b>Reverse Brush Drop:</b>	<b>35 Feet</b>	<b>Oil Per Board:</b>	<b>50 uL</b>
<b>Forward Oil Total:</b>	<b>10.55 mL</b>	<b>Reverse Oil Total:</b>	<b>13.35 mL</b>	<b>Volume Oil Total:</b>	<b>23.9 mL</b>
<b>Forward Boards Crossed:</b>	<b>211 Boards</b>	<b>Reverse Boards Crossed:</b>	<b>267 Boards</b>	<b>Total Boards Crossed:</b>	<b>478 Boards</b>

	Start	Stop	Loads	Speed	Crossed	Start	End	Feet	T.Oil
1	2L	2R	1	14	37	0.0	0.0	0.0	1850
2	5L	5R	2	14	62	0.0	3.9	3.9	3100
3	6L	6R	2	18	58	3.9	9.0	5.1	2900
4	7L	7R	2	18	54	9.0	14.1	5.1	2700
5	2L	2R	0	22	0	14.1	26.0	11.9	0
6	2L	2R	0	26	0	26.0	35.0	9.0	0

Conditioner: Fire  
TransferType: Transfer Roller

Forward  
Reverse  
Combined  
Buff

	Start	Stop	Loads	Speed	Crossed	Start	End	Feet	T.Oil
1	2L	2R	0	30	0	35.0	28.0	-7.0	0
2	8L	8R	1	18	25	28.0	25.5	-2.5	1250
3	7L	7R	2	18	54	25.5	20.4	-5.1	2700
4	6L	6R	2	14	58	20.4	16.5	-3.9	2900
5	5L	5R	2	14	62	16.5	12.6	-3.9	3100
6	4L	4R	1	14	33	12.6	10.7	-1.9	1650
7	3L	3R	1	14	35	10.7	8.8	-1.9	1750
8	2L	2R	0	14	0	8.8	0.0	-8.8	0



BOARDWALK - 2435

Item	3L-7L:18L-18R	8L-12L:18L-18R	13L-17L:18L-18R	18L-18R:17R-13R	18L-18R:12R-8R	18L-18R:7R-3R
Description	Outside Track:Middle	Middle Track:Middle	Inside Track:Middle	Middle:Inside Track	Middle:Middle Track	Middle:Outside Track
Track Zone Ratio	2.11	1	1	1	1	2.11

